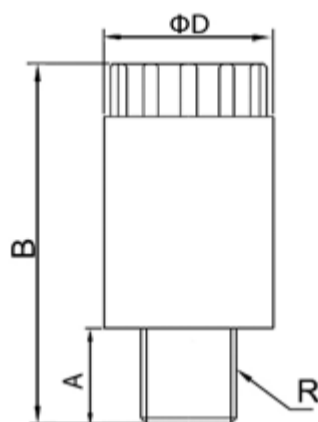


PSM Miniature Plastic Muffler



Body(noise absorbing material): Polyethylene
Base(thread): Polyethylene

Working Pressure: 0—1.0MPa | 0—150psi
Proof Pressure: 3.0Mpa | 435psi
Negative Pressure: -100Kpa | -29.5 In Hg
Working Temperature: 0~60°C | 32~140°F



PART NO.	Sound Pressure Level*	R	A(mm)	B(mm)	D(mm)
PSM M5x0.8	75	M5 x 0.8	4.8	18.2	8.2

* Sound pressure level measured at 6 bar at 1 m distance.

** Information contained herein may be changed without prior notification.